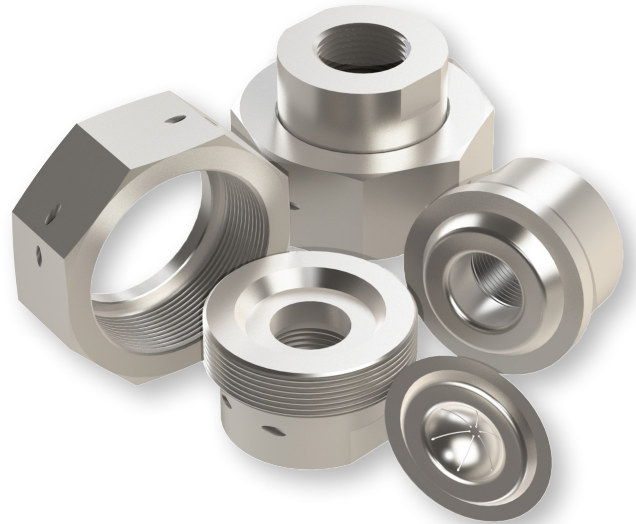


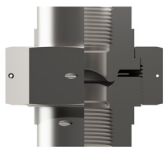
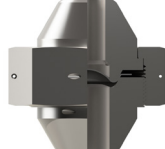
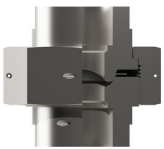
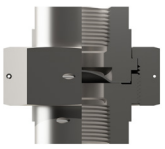
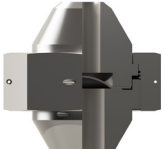
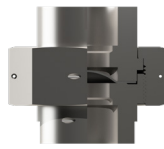
Features

- Designed for use with PBUT, DUT or SFAZUT series rupture disks
- Low cost, ideal where installation space is limited
- Standard 30° angle seat design. Flat seat in stainless steel and 6000# only
- Sizes: 1/2" (13mm), 3/4" (20mm), 1" (25mm), 1-1/2" (40mm), 2" (50mm)
- Standard materials of construction: carbon steel and stainless steel. Other materials are available, contact ZOOK
- 2U Threaded (FNPT) inlet and outlet connections standard. Contact ZOOK regarding Butt-Weld or Socket-Weld connections
- ASME UD and CE marking available upon request. Contact ZOOK for more information






Reusable units for use on:

- Oil and Gas
- Air Conditioning Systems
- High Pressure Cleaning Equipment
- Gas Cylinders
- Laboratory Equipment
- Autoclaves

	Threaded	Butt-Weld	Socket-Weld
30° Angle Seat	 2U	 6U	 6USW
Flat Seat	 FS2U	 FS6U	 FS6USW

Union Type Specifications

Size	Rating	Approximate Dimensions (in/mm)		Max Burst Pressure psig (barg) @ 72°F (22°C)*		Standard Lip (SL)	Heavy Duty Lip (HDL)	Flat Seat
		Across Flats	Height	SST	CS			
1/2"	3000#	1-29/32	2-3/32	Min - 2915	Min - 3000	●		
	6000#	2-1/2	2-7/8	Min - 5835	Min - 6000		●	
		2-1/4	2-19/32					●
13 mm	3000#	49	54	Min - 200.98	Min - 206.84	●		
	6000#	64	74	Min - 402.30	Min - 413.69		●	
		58	66					●
3/4"	3000#	2-1/4	2-19/32	Min - 2915	Min - 3000	●		
	6000#	2-1/2	2-9/16	Min - 5835	Min - 6000		●	
		2-1/2	2-19/32					●
20 mm	3000#	58	66	Min - 200.98	Min - 206.84	●		
	6000#	64	66	Min - 402.30	Min - 413.69		●	
		64	66					●
1"	3000#	2-1/2	2-19/32	Min - 2915	Min - 3000	●		
	6000#	3-1/4	3-1/16	Min - 5835	Min - 6000		●	
		3-1/4	3-1/32					●
25 mm	3000#	64	66	Min - 200.98	Min - 206.84	●		
	6000#	83	78	Min - 402.30	Min - 413.69		●	
		83	77					●
1-1/2"	3000#	3-1/4	3-3/32	Min - 2915	Min - 3000	●		
	6000#	4	3-15/32	Min - 5835	Min - 6000		●	
		3-3/4	3-1/4					●
40 mm	3000#	83	79	Min - 200.98	Min - 206.84	●		
	6000#	102	89	Min - 402.30	Min - 413.69		●	
		96	83					●
2"	3000#	4-1/2	3-17/32	Min - 2915	Min - 3000	●		
50 mm	3000#	115	90	Min - 200.98	Min - 206.84	●		

Notes:

- * Contact ZOOK for alternate temperatures
- Refer to PB, D or SFAZ series rupture disk series data sheets for additional information
- Table dimensions are approximate
- Overall heights are without disk thickness



UnionType_112023

zookdisk.com



SERVING AMERICA, CENTRAL & SOUTH AMERICA
 16809 Park Circle Drive
 Chagrin Falls, Ohio 44022
 United States
 Toll Free: +1 800 543 1043
 Phone: +1 440 543 1010
 E-mail: sales@zookdisk.com

SERVING EUROPE, MIDDLE EAST & AFRICA
 Navigation House, Bridge St.
 Killamarsh, Sheffield, S21 1AL
 United Kingdom
 Phone: +44 (0) 1909 560999
 E-mail: sales.europe@zookdisk.com

SERVING CANADA
 4400 South Service Road
 Burlington, Ontario, L7L 5R8
 Canada
 Toll Free: +1 800 370 6057
 Phone: +1 905 681 2885
 E-mail: sales.canada@zookdisk.com

SERVING ASIA PACIFIC
 Menara LGB TTD1
 Unit 6-3A, Level 6, Menara LGB,
 No. 1, Jalan Wan Kadir,
 Taman Tun Dr. Ismail,
 60000 Kuala Lumpur, Malaysia
 Phone: +603 2706 0098
 E-mail: sales.asia@zookdisk.com