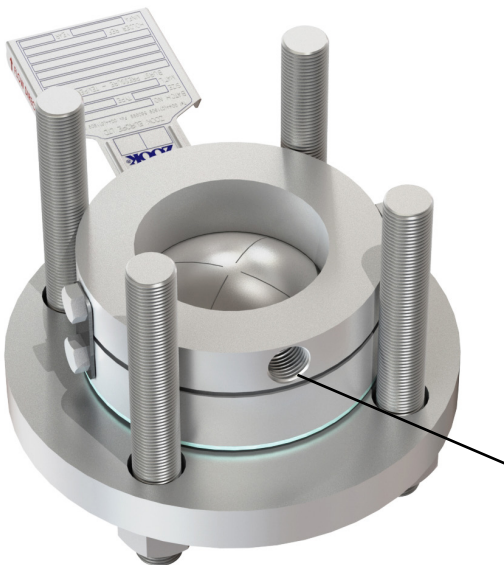


## Features

- Designed for use with forward acting SFAZ and FDZ series disks
- Flat seat provides improved rupture disk sealing
- Available in nominal sizes ranging from 1/2" (13 mm) thru 30" (750 mm) in standard flange classes
- Standard materials of construction are: 316 and carbon steel. Other materials available on request
- Flow direction arrows on disk tag and holder provides permanent visual verification that holder assembly is properly oriented in the piping system
- Stainless steel safety designed side clips are standard, allowing for pre-assembly of disk into holder



## Options / Accessories



### Eye Bolt

- To assist in lifting



### PTFE Sleeved Holder Inlet

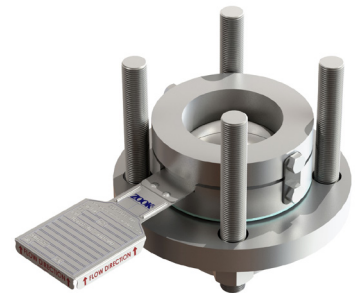
- Ideal for corrosive applications and reducing product build-up (Refer to PTFE Sleeved Holder Inlet Data Sheet)

### Tantalum Coating

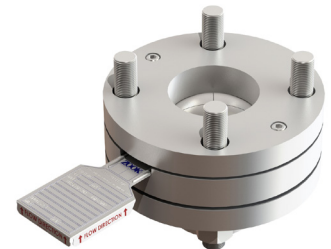
- Ideal for extreme corrosive applications and higher temperatures

### Gauge Tap

- Used for monitoring pressure/temperature at rupture disk location
- Also available on inlet holder



UHZ



UHZ7

# UHZ Series Dimensions and Specifications

## Holder Dimensions / Specifications

Nominal Size	Flange Class	Height (in / mm)	Holder O.D. (in / mm)	Estimated Weight (lbs / kgs)
1/2"	150	1.63	1.75	1.1
	300/600		2	1.4
13 mm	10/16/25/40	41.3	51	0.7
3/4"	150	1.63	2.125	1.3
	300/600		2.5	2.0
20 mm	10/16/25/40	41.3	61	0.8
1"	150	1.63	2.5	1.8
	300/600		2.75	2.3
25 mm	10/16/25/40	41.3	71	1.1
1-1/2"	150	1.63	3.25	2.9
	300/600		3.63	3.9
40 mm	10/16/25/40	41.3	92	1.8
2"	150	1.63	4	4.0
	300/600		4.25	4.8
50 mm	10/16/25/40	41.3	107	2.1
2-1/2"	150	1.63	4.75	5.5
	300/600		5	6.5
65 mm	10/16/25/40	41.3	127	3.0
3"	150	1.63	5.25	6.3
	300/600		5.75	8.5
80 mm	10/16/25/40	41.3	142	3.5
4"	150	1.875	6.75	11.9
	300		7	13.3
100 mm	10/16	47.6	162	4.4
6"	150	2.5	8.63	20.2
	300		9.75	33.2
150 mm	10/16	63.5	218	9.0
8"	150	2.875	10.88	33.2
	300		12	51.8
200 mm	10/16	73	273	14.2

Contact ZOOK for alternate sizes and/or flange classes

Nominal Size	Flange Class	Height (in / mm)	Holder O.D. (in / mm)	Estimated Weight (lbs / kgs)
10"	150	3.25	13.25	53.3
	300		14.13	72.9
250 mm	10	82.6	328	20.9
	16		329	21.3
12"	150	3.63	16	90.9
	300		16.5	105.7
300 mm	10	92.1	378	27.0
	16		384	29.9
14"	150	3.88	17.63	111.6
	300		19	160.7
350 mm	10	98.4	438	44.8
	16		444	48.4
16"	150	4.38	20.13	163.9
	300		21.13	209.2
400 mm	10	111.1	489	57.2
	16		495	61.7
18"	150	4.75	21.5	165.0
	300		23.38	265.5
450 mm	10	120.7	539	68.4
	16		555	83.1
20"	150	5.5	23.75	226.8
	300		25.63	354.8
500 mm	10	139.7	594	92.1
	16		617	119.2
24"	150	6.5	28.13	351.3
	300		30.38	566.3
600 mm	10	165.1	695	128.0
	16		734	192.0
30"	150	4.75	34.63	338.8



UHZ\_032022

[zookdisk.com](http://zookdisk.com)



**SERVING AMERICA, CENTRAL & SOUTH AMERICA**  
 16809 Park Circle Drive  
 Chagrin Falls, Ohio 44022  
 United States  
 Toll Free: +1 800 543 1043  
 Phone: +1 440 543 1010  
 E-mail: [sales@zookdisk.com](mailto:sales@zookdisk.com)

**SERVING EUROPE, MIDDLE EAST & AFRICA**  
 Navigation House, Bridge St.  
 Killamarsh, Sheffield, S21 1AL  
 United Kingdom  
 Phone: +44 (0) 1909 560999  
 E-mail: [sales.europe@zookdisk.com](mailto:sales.europe@zookdisk.com)

**SERVING CANADA**  
 4400 South Service Road  
 Burlington, Ontario, L7L 5R8  
 Canada  
 Toll Free: +1 800 370 6057  
 Phone: +1 905 681 2885  
 E-mail: [sales.canada@zookdisk.com](mailto:sales.canada@zookdisk.com)

**SERVING ASIA PACIFIC**  
 Menara LGB TTD1  
 Unit 6-3A, Level 6, Menara LGB,  
 No. 1, Jalan Wan Kadir,  
 Taman Tun Dr. Ismail,  
 60000 Kuala Lumpur, Malaysia  
 Phone: +603 2706 0098  
 E-mail: [sales.asia@zookdisk.com](mailto:sales.asia@zookdisk.com)

Safety through knowledge and performance.